

Verkehrserhebung

Ort: Zürich, Wildbachstrasse Haus-Nr 18
Datum: 19.09.2022 - 03.10.2022

Auftragsnr.: 14.0237
Bearbeiter: hoz

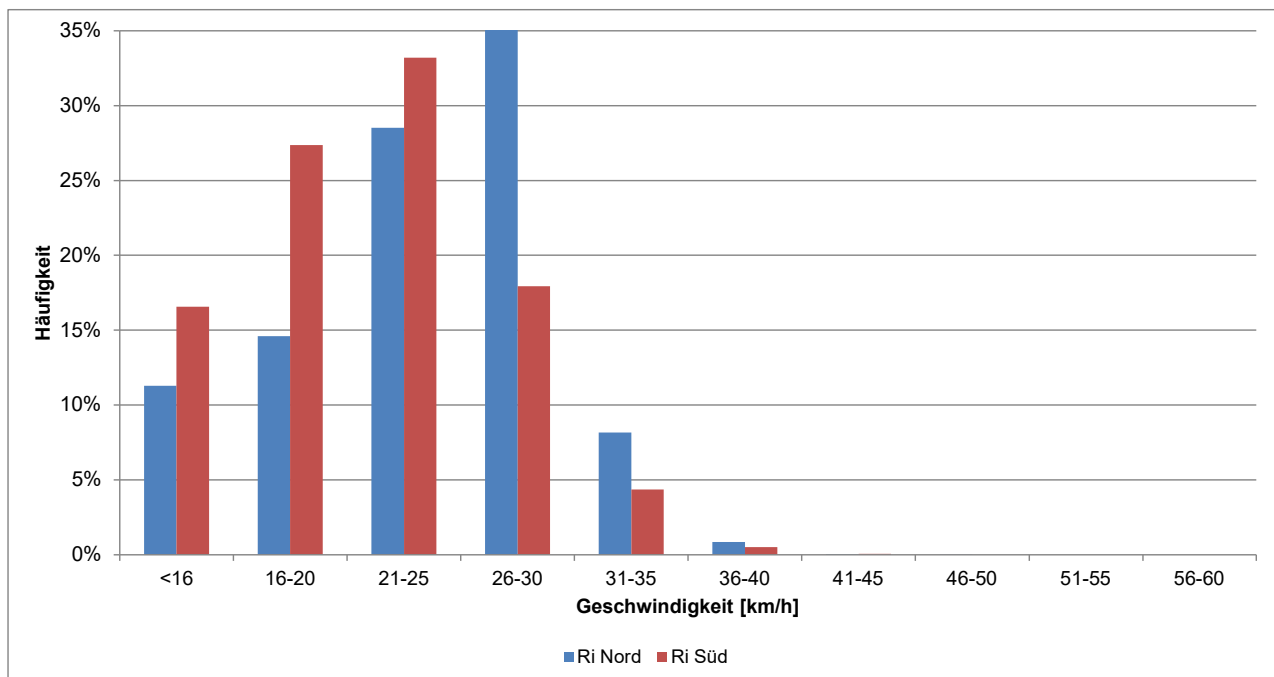


Messperiode 19.09.2022 - 03.10.2022

Korrigierte Jahreswerte

| | Ri Nord | Ri Süd | Total | | Ri Nord | Ri Süd | Total |
|-------------|---------|--------|------------|------------------|---------|--------|------------|
| DTV | 799 | 135 | 933 Fz/d | DTV | 799 | 135 | 933 Fz/d |
| DWV | 966 | 150 | 1'116 Fz/d | DWV | 966 | 150 | 1'116 Fz/d |
| SaSo | 399 | 98 | 497 Fz/d | SaSo | 399 | 98 | 497 Fz/d |
| MSP (7-8) | 112 | 4 | 116 Fz/h | MSP (7-8) | 112 | 4 | 116 Fz/h |
| ASP (17-18) | 77 | 11 | 88 Fz/h | ASP (17-18) | 77 | 11 | 88 Fz/h |
| Nt | 772 | 123 | 895 Fz/d | Nt | 772 | 123 | 895 Fz/d |
| Nn | 27 | 11 | 38 Fz/d | Nn | 27 | 11 | 38 Fz/d |
| Nt2 | 43 | 8 | 51 Fz/d | Nt2 | 43 | 8 | 51 Fz/d |
| Nn2 | 1 | 0 | 1 Fz/d | Nn2 | 1 | 0 | 1 Fz/d |
| | 0 | 0 | | | 0 | 0 | 0 |
| Nt | 48 | 8 | 56 Fz/h | Nt | 48 | 8 | 56 Fz/h |
| Nn | 3 | 1 | 5 Fz/h | Nn | 3 | 1 | 5 Fz/h |
| | 0 | 0 | | | 0 | 0 | 0 |
| Nt1 | 46 | 7 | 53 Fz/h | Nt1 | 46 | 7 | 53 Fz/h |
| Nn1 | 3 | 1 | 5 Fz/h | Nn1 | 3 | 1 | 5 Fz/h |
| | 0 | 0 | | | 0 | 0 | 0 |
| Nt2 | 3 | 0 | 3 Fz/h | Nt2 | 3 | 0 | 3 Fz/h |
| Nn2 | 0 | 0 | 0 Fz/h | Nn2 | 0 | 0 | 0 Fz/h |
| | | | | | | | |
| V_m | 25 | 21 | 23 km/h | Korrekturfaktor* | | 1.00 | |
| Vt_m | 25 | 21 | 23 km/h | | | | |
| Vn_m | 25 | 22 | 24 km/h | | | | |
| | | | | | | | |
| V_85 | 29 | 27 | 28 km/h | | | | |
| Vt_85 | 29 | 27 | 28 km/h | | | | |
| Vn_85 | 30 | 27 | 29 km/h | | | | |
| | | | | | | | |
| Vt_max | 48 | 42 | 48 km/h | | | | |
| Vn_max | 39 | 39 | 39 km/h | | | | |

* Es wurde bis anhin kein Korrekturfaktor (monatliche Schwankungen) hinterlegt.



Ort: Zürich, Wildbachstrasse Haus-Nr 18
 Datum: 19.09.2022 - 03.10.2022

